



Prepare for Snow Leopard in 3 Easy Steps And Minimize End-User Downtime

Migrate Smoothly to Snow Leopard with Absolute Manage

| | |
|--|---|
| Migration Impact on IT and End-Users | 2 |
| Step 1: Deploy Smarter Images | 2 |
| Step 2: Restore Installed Software Faster | 2 |
| Step 3: Keep Snow Leopard Running Smoothly | 2 |
| About Absolute Software | 3 |

Migration Impact on IT and End-Users

Migrating from Mac OS X Leopard to Snow Leopard can be a labor-intensive operation that takes several hours and requires a local visit to the end-user's computer. Multiply this by the number of Macs you need to upgrade and migrating systems can easily monopolize the time of your support staff.

When you need to migrate operating systems, it's not only support staff time that's tied up. End-user productivity is lost every time computers are taken off-line for service.

Step 1: Deploy Smarter Images

Absolute® Manage (formerly LANrev) ImageLive enables you to deploy a complete Snow Leopard disk image to any managed Mac OS X computer, even while it is being used. No intermediate boot from a server, FireWire drive, or boot DVD is necessary, and no pre-configuration of the target computer is required.

- **Save work and personal files.** First move files to be saved into the home directory. Absolute Manage can automatically migrate the system's user home folders to the new operating system.
- **Save OS configurations.** Absolute Manage can also migrate local user accounts and passwords, network settings, computer name, and Directory Access settings, so you don't have to reconfigure the new operating system from scratch. The Absolute Manage Agent and its settings can also be migrated to the new Snow Leopard installation to maintain management and control by Absolute Manage.
- **Save yourself a trip.** If anything were to happen during the disk imaging process, such as an interrupted network connection, the system will simply boot into the old operating system and the imaging can be restarted. No need to visit the machine and redo the imaging by hand. ImageLive is non-destructive so the previous operating system is not removed until you've successfully booted into the new one.

Upon reboot after an ImageLive operation, end-users will find a new installation of Snow Leopard with the same system settings and desktop as they had before from Leopard.

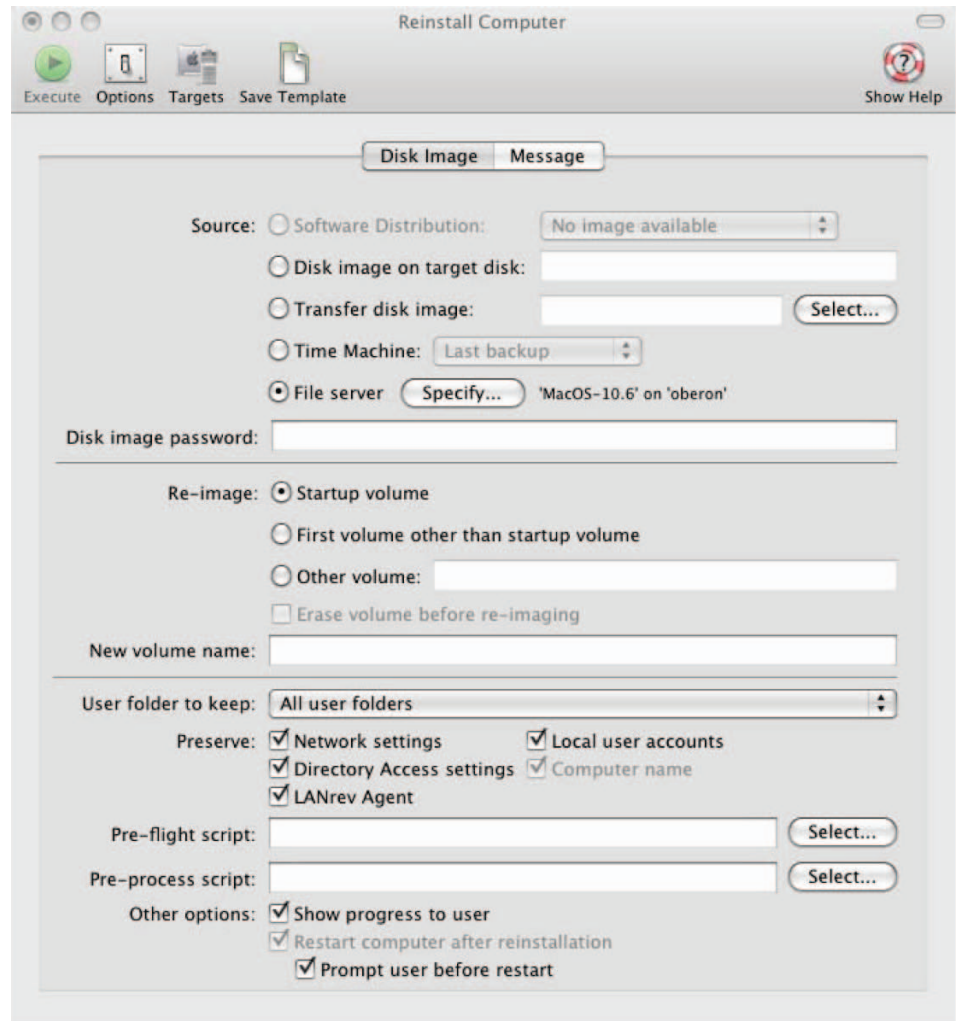
Step 2: Restore Installed Software Faster

Use Absolute Manage to inventory installed software. The Absolute Manage policy-based software distribution can then automatically reinstall any of the end-user applications that were not included as part of the disk image.

Step 3: Keep Snow Leopard Running Smoothly

Be sure to enable Absolute Manage automated patch management to ensure the latest OS updates are installed without having to wait for end-user interaction. This can be enabled before or after imaging.

The Absolute Manage suite of tools simplifies the migration to Snow Leopard, reduces end-user downtime, and frees up IT staff to work on other important tasks.



For more information on Compliance, Protection and Recovery, and to learn how your organization can deliver a layered approach to corporate security, please contact:

Absolute Software

Tel: 1 800 220 0733
 or 604 730 9851
 Fax: 604 730 2621

www.absolute.com

About Absolute Software

Absolute Software Corporation is the leader in Computer Theft Recovery, Data Protection and Secure Asset Tracking® solutions. Absolute Software provides organizations and consumers with solutions in the areas of regulatory compliance, data protection and theft recovery. The Company's Computrace® software is embedded in the firmware of computers by global leaders, including Dell, Fujitsu, MPC, General Dynamics Itronix HP, Lenovo, Motion, Panasonic and Toshiba, and the Company has reselling partnerships with these OEMs and others, including Apple. For more information about Absolute Software and Computrace, visit www.absolute.com or blog.absolute.com.

© 2010 Absolute Software Corporation. All rights reserved. Computrace and Absolute are registered trademarks of Absolute Software Corporation. All other trademarks are property of their respective owners. ABT-AM-SLM-WP-E-011910